



Whether you are building a new home, renovating an existing one, or fixing a problem like a leaky roof or wet basement, helping your customers understand the importance of proper ventilation and clean air will not only help them enjoy their home more, it can have long-term benefits for their health.



Key Selling Points:

- ✓ Maintenance free with no filters to change or buckets to empty
- ✓ Energy efficient: Operates for pennies per day
- ✓ Lowers overall heating bills
- ✓ Quiet-running, compact unit allows for unobtrusive operation
- ✓ Large capacity: One unit does work comparable to multiple dehumidifiers
- ✓ Versatile: Can be used in full basements, slabs, crawl spaces, and/or garages
- ✓ Flexible installation options - against unfinished or finished wall.



How we Compare

	Humidex®	HVAC Duct	Other Ventilation Units	Traditional Dehumidifier
Monitors Basement & Crawl Space Conditions	●	—	—	●
Reduces Radon Gas Concentration	●	—	●	—
Controls CO Concentration	●	—	—	—
Reduces Mold Spores	●	—	—	—
Reduces VOCs Concentration Levels	●	●	●	—
Eliminates Musty Odors	●	●	●	—
Provides Air Circulation	●	●	●	—
Reduces Air Leakage	●	—	●	—
Basement & Crawl Space Air Balance	●	—	—	●
Energy Costs per Month	A few dollars	A few dollars	A few dollars	\$30 to \$90
Air Exchange	Continuous	Continuous	Intermittent	—
Technology	Computerized	N/A	Dial	Basic
Maintenance	—	—	Somehow	Buckets/Filters

● Yes ● Somehow or Incompletely — None

Marketing Tools

- Material for your Website and advertising
- Brochures/Flyers
- Printable pamphlets
- Referral on manufacturer's Website to help customers find you
- Advice and technical support with case scenarios, etc., which as professional customers, you may need
- All promotions and social media campaigns that you may find advantageous
- Marketing materials provide free of charge



Salesforce and Technical Training

We will teach your sales people
how to sell the systems

Your installers will learn
how to install the systems

You will learn
how to make this business profitable.



After the sale, your customers can access our support team for support and warranty concerns

Our customer support services include:

- highly responsive customer service
- highly responsive technical assistance
- Comprehensive dealer training and ongoing support
- technical documentation
- warranty fulfillment
- parts replacement



Indoor Air Quality (IAQ) refers to the air quality within and around buildings and structures, especially as it relates to the health and comfort of building occupants.

Understanding and controlling common pollutants indoors can help reduce the risk of indoor health concerns.

What they don't see (for example, the indoor air they breathe every day) is just as vital as what they do see.





Whether your customer is someone who enjoys all the efficiencies of a newly built home,

Or someone who enjoys the character and charm of an older home,

It is important for them to understand all the ins-and-outs of how their place is ventilated.

With improvements in building codes and construction practices, new houses tend to be more airtight while older ones require renovations and upgrading to eliminate leakage and drafts.

*(If) a house is stuffy, has lingering odors,
or has high humidity levels in fall and
winter, it is likely the house does not
receive adequate ventilation.*



Natural Resources
Canada

Naturally, many people think that opening windows is the easiest way to provide fresh air, but they risk problems such as driving wind or rain, increased heating or cooling costs, and even security issues.

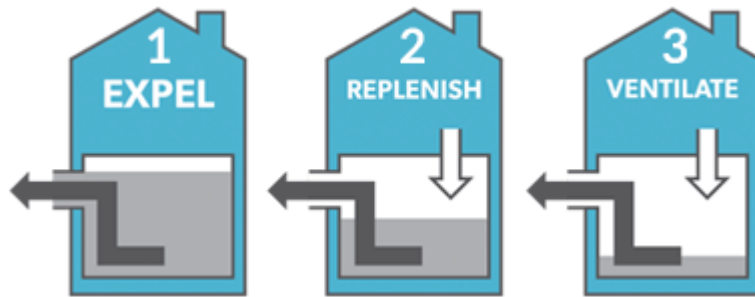


Natural Resources Canada suggests that using a mechanical ventilation system, such as an exhaust fan or a heat or energy recovery ventilator (HRV/ERV), can be more effective.

For over 30 years,
ClairiTech has been single-mindedly
dedicated to continuous innovation in
mechanical ventilation.



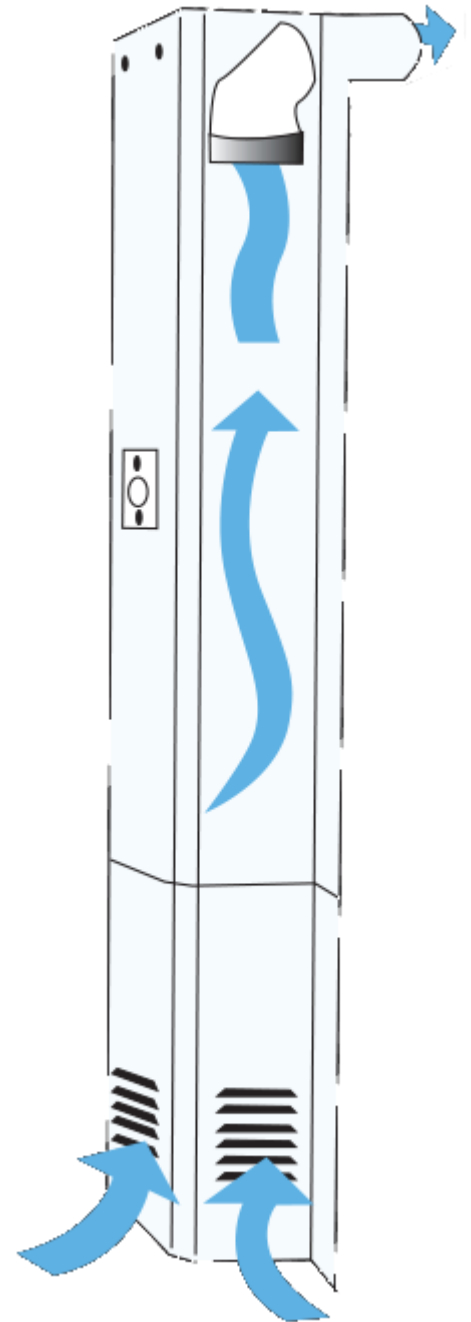
We have built our reputation
on moisture control and
ventilation systems
designed to create cleaner,
drier air year-round by a
three-step process.



Our systems expel odors, excess moisture, mold spores and other pollutants from the downstairs where they are most concentrated.

They replenish the air in the basement with a fresher healthier supply of air from upstairs, lowering the relative humidity.

Ultimately, they ventilate the entire home with continuous air flow, extracting moisture that can cause structural damage, reducing biological growth of mold and mildew, achieving healthier air.



(A basement is) an ideal location where mold can grow since it is usually the dampest area of the home and often has poor air circulation. Exposure to mold can trigger asthma symptoms such as wheezing, coughing, and shortness of breath, as well as allergic reactions.

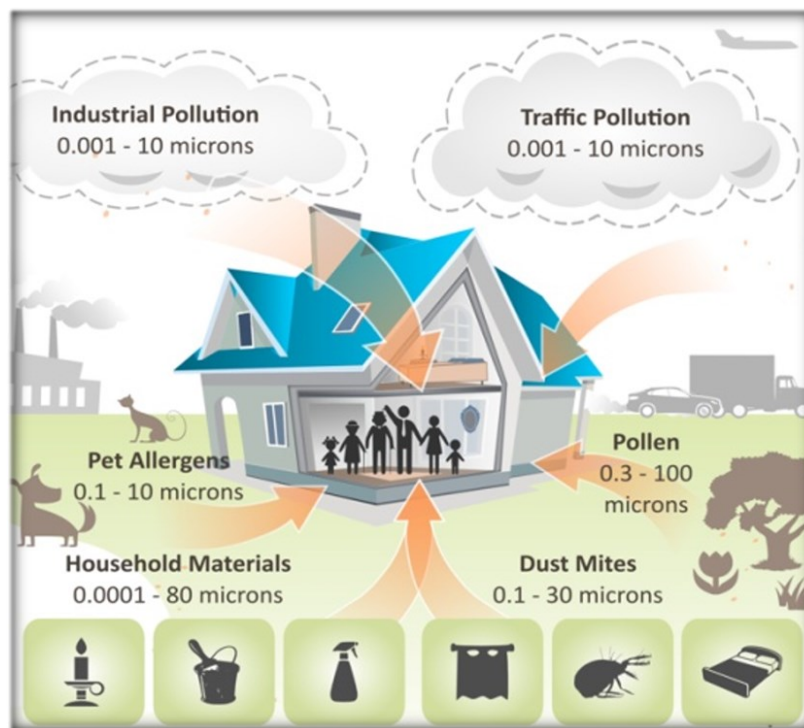
B R E A T H E
the lung association

While the benefits of dehumidifiers are mentioned by the Canadian Lung Association, they do not exchange the stale air or ventilate the basement. In most cases, they need to be emptied on a regular basis, and they use a lot of electricity to operate.

Economical to operate, our Humidex systems will recirculate tempered air from upstairs to the basement, improving heating and air conditioning efficiency.

Outdoor pollution isn't that extreme, but what about the quality of the air inside the dwellings where we live?

- Air quality is the quality of the air surrounding us
- Good air is clean and free of pollutants
- Poor air quality affects our health



Approximately 65% of outdoor air particle inhalation occurs indoors.

Digital Ventilation System (DVS) Models

- The DVS models are equipped with a digital user interface
- Efficient electronic components
- Multiple settings for the desired relative humidity level
- 3 fan speeds can be selected
- Humidity indicator



DVS Basement Models

Standard Basement Unit (DVS-BS)

Surface area: up to 1500 sq ft

Easily adjust the settings
for your comfort zone

Maintenance Free

Large Basement Unit (DVS-BH)

Surface area: up to 2100 sq ft

Easily adjust the settings for
your comfort zone

Maintenance Free



DVS Crawl Space Models



Standard Crawl Space Unit (DVS-CS)

Surface area: up to 1800 sq ft

Most economical and
energy efficient unit

User Friendly
Digital Interface



Large Crawl Space Unit (DVS-CH)

Surface area: up to 2400 sq ft

High capacity unit

User Friendly
Digital Interface

DVS Crawl Space Models



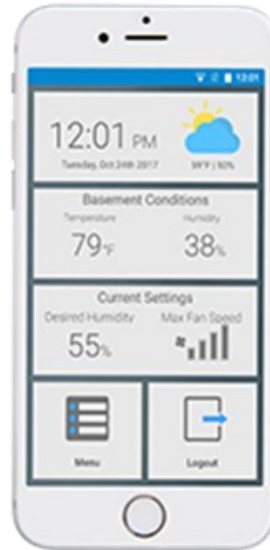
Crawl Space w/Booster (DVS-CE)

Surface area: up to 3000 sq ft

Enhanced booster fan
specially designed
crawlspac units

Energy-efficient with
very low electricity
consumption

The HCS series with
myHome
is our most
innovative moisture
control and ventilation
units ever, with a smart
app that allows you to
remotely monitor
your home's indoor
conditions 24/7 from
your phone or tablet.



HCS w/myHome Basement Model

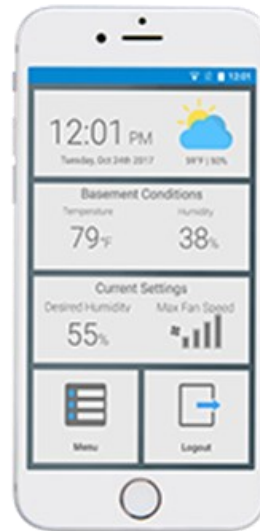
HCS w/myHome Wireless Technology (HCS-BS myHome)

Surface area: up to 2400 sq ft

IOS & Android App

Detect and exhaust
Carbon Monoxide

Energy-efficient with
very low electricity



HCS w/myHome Crawl Space Models



myHome w/Wireless & Mobile App (HCS-CmH)

Surface area: up to 3000 sq ft

Detects and Exhaust
Carbon Monoxide

Easy to set up and control

IOS & Android App & Wifi



myHome w/Wireless, Mobile App & Booster (HCS-CmHBa)

Surface area: up to 3000 sq ft

Booster fan enhanced
specially designed
crawlspace units

IOS & Android App & Wifi

HCS w/myHome Apartment Models



myHome Automated System w/Wireless & Mobile App (HCS-APT-myHome)

Surface area: up to 2000 sq ft

Detects & Exhaust
Carbon Monoxide

Easy to set up and adjust

IOS & Android App and WiFi



Automated Tamperproof System w/Wireless & Mobile App (HCS-APTHC-Myhome)

Surface area: up to 2000 sq ft

IOS & android App

Detects & Remove
Carbon Monoxide

Operates Automatically

HCS w/myHome Apartment Models



**Automated System
w/Wireless & Mobile App
+ Remote Control
(HCS-APTRC-MyHome)**

Surface area: up to 2000 sq ft

Operates Automatically

IOS & android App

Remote Control

Garage Ventilation Systems

GVS-H-B



GVS-SD2



Perfect for:



- Garages
- Greenhouses
- Sheds
- Baby Barns
- All confined areas of up to 750 sq.ft.